



ORIGINAL INSTRUCTIONS

WHAT'S INCLUDED

Part	Qty
Router	1
1/4" Collet	1
Dust Port	1
Collet Wrench	1
Carbon Brushes	2

SPECIFICATIONS

Model Reference Number	TR710DS
Voltage	230V
Power	710W
No Load Speed	13,000-33,000 rpm
Collet Size	1/4"
Stroke Length	15mm
Weight	2.9kg

GENERAL SAFETY INSTRUCTIONS

! WARNING: Read and understand all instructions. Failure to follow all instructions listed below may result in electric shock, fire and/or serious personal injury.

READ ALL INSTRUCTIONS

KNOW YOUR POWER TOOL

Read the operator's manual carefully. Learn the applications and limitations as well as specific potential hazards related to this tool.

GUARD AGAINST ELECTRICAL SHOCK BY PREVENTING BODY CONTACT WITH GROUNDED SURFACES

For example: pipes, radiators, ranges, refrigerator enclosures.

KEEP GUARDS IN PLACE and in working order.

REMOVE ADJUSTING KEYS AND WRENCHES

Form a habit of checking to see keys and adjusting wrenches are removed from the tool before turning it on.

KEEP THE WORK AREA CLEAN

Cluttered work areas and work benches invite accidents. *DO NOT* leave tools or pieces of wood on the tool while it is in operation.

DO NOT USE IN DANGEROUS ENVIRONMENTS

DO NOT use power tools in damp or wet locations or expose them to rain. Keep the work area well lit.

KEEP CHILDREN AND VISITORS AWAY

All visitors should wear safety glasses and be kept a safe distance from work area. Do not let visitors contact tools or extension cords while operating.

MAKE WORKSHOPS CHILDPROOF

By removing switch keys, unplugging tools from the electrical receptacles, and using padlocks.

DON'T FORCE THE TOOL

It will do the job better and safer at the rate for which it was designed.

USE THE RIGHT TOOL

DO NOT force the tool or attachment to do a job for which it was not designed.

USE THE PROPER EXTENSION CORD

Make sure your extension cord is in good condition. Use only a cord heavy enough to carry the current your product will draw.

KEEP BLADES CLEAN, SHARP, AND WITH SUFFICIENT SET

Sharp blades minimize stalling and kickback.

DRESS APPROPRIATELY

DO NOT wear loose clothing, neckties, or jewelry that can get caught and draw you into moving parts. Rubber gloves and nonslip footwear are recommended when working outdoors. Also wear protective hair covering to contain long hair.

ALWAYS WEAR SAFETY GLASSES WITH SIDE SHIELDS

Everyday eyeglasses have only impact resistant lenses, they are *NOT* safety glasses.

SECURE WORK

Use clamps or a vice to hold work when practical, it is safer than using your hand and frees both hands to operate the tool.

DO NOT OVERREACH

Keep proper footing and balance at all times.

MAINTAIN TOOLS WITH CARE

Always keep tools clean and in good working order. Keep all blades and tool bits sharp, dress grinding wheels and change other abrasive accessories when worn.

DISCONNECT TOOLS

When not in use, before servicing, or when changing attachments, blades, bits, cutters, etc., all tools should be disconnected from the power supply.

AVOID ACCIDENTAL STARTING

Always check that the switch is off before plugging any power tool into a power source.

USE RECOMMENDED ACCESSORIES

The use of incorrect or improper accessories may result in injury to the operator or damage to the tool.

NEVER STAND ON A TOOL

Serious injury could occur if the tool is tipped.

CHECK DAMAGED PARTS

Before further use of the tool, a guard or other part that is damaged should be carefully checked to determine that it will operate properly and perform its intended function. Check for alignment of moving parts, binding of moving parts, breakage of parts, mounting and any other conditions that may affect its operation. A guard or other part that is damaged must be properly repaired or replaced by an authorised service centre to avoid risk of personal injury.

GENERAL SAFETY INSTRUCTIONS

USE THE RIGHT DIRECTION OF FEED

Feed work into a blade, cutter, or sanding spindle against the direction or rotation of the blade, cutter, or sanding spindle only.

NEVER LEAVE A TOOL RUNNING UNATTENDED TURN THE POWER OFF!

Never leave the tool unattended until it comes to a complete stop.

PROTECT YOUR LUNGS

Always wear a face or dust mask to prevent inhaling dangerous dust or airborne particles including wood dust, crystalline silica dust and asbestos dust. Direct particles away from face and body. Always operate tool in well ventilated area and provide for proper dust removal. Use a dust collection system wherever possible. Exposure to the dust may cause serious and permanent respiratory or other injury, including silicosis (a serious lung disease), cancer, and death. Avoid breathing the dust, and avoid prolonged contact with dust. Allowing dust to get into your mouth or eyes, or lay on your skin may promote absorption of harmful material. Always use properly fitting approved respiratory protection appropriate for the dust exposure, and wash exposed areas with soap and water.

PROTECT YOUR HEARING

Wear hearing protection during extended periods of operation.

DO NOT ABUSE THE POWER CORD

Never carry a tool by the cord or yank it to disconnect it from the receptacle. Keep cord away from heat, oil, and sharp edges.

USE OUTDOOR EXTENSION CORDS

When the tool is used outdoors, use only extension cords with approved ground connection that are intended for use outdoors and so marked.

NEVER USE IN AN EXPLOSIVE ATMOSPHERE

Normal sparking of the motor could ignite fumes, gases and flammable liquids.

INSPECT TOOL CORDS PERIODICALLY

If damaged, have repaired by a qualified service technician at an authorised service facility. Repair or replace a damaged or worn cord immediately. Stay constantly aware of cord location and keep it well away from the rotating blades and parts.

INSPECT EXTENSION CORDS PERIODICALLY

Replace if damaged.

KEEP TOOL DRY, CLEAN, AND FREE FROM OIL AND GREASE

Always use a clean cloth when cleaning. Never use brake fluids, gasoline, petroleum-based products, or any solvents to clean the tool.

STAY ALERT AND EXERCISE CONTROL

Watch what you are doing and use common sense. *DO NOT* operate the tool when you are tired. *DO NOT* rush.

DO NOT USE TOOL IF SWITCH DOES NOT TURN IT ON AND OFF

Have defective switches placed by an authorised service centre.

INSPECT FOR AND REMOVE ALL NAILS FROM LUMBER BEFORE USING THIS TOOL

Following this rule will reduce the risk of serious personal injury.

NEVER START A TOOL WHEN ANY ROTATING COMPONENT IS IN CONTACT WITH THE WORKPIECE

DO NOT OPERATE A TOOL WHILE UNDER THE INFLUENCE OF DRUGS, ALCOHOL, OR ANY MEDICATION!

WHEN SERVICING

Use only identical replacement parts. Use of any other parts may create a hazard or cause product damage.

DOUBLE CHECK ALL SETUPS

Make sure the tool assembly is tight and not making contact with the workpiece before connecting to power supply.

SPECIFIC SAFETY INSTRUCTIONS

1. **Hold power tools by insulated gripping surfaces when performing an operation where the cutting tool may contact hidden wiring or its own cord.** Contact with a "live" wire will make exposed metal parts of the tool "live" and shock the operator.
2. **Use clamps or another practical way to secure and support the workpiece to a stable platform.** Holding the work by hand or against your body leaves it unstable and may lead to loss of control.
3. Wear hearing protection during extended period of operation.
4. Handle the bits very carefully.
5. Check the bit carefully for cracks or damage before operation. Replace cracked or damaged bit immediately.
6. Avoid cutting nails. Inspect for and remove all nails from the workpiece before operation.
7. Hold the tool firmly with both hands.
8. Keep hands away from rotating parts.
9. Make sure the bit is not contacting the workpiece before the switch is turned on.
10. Before using the tool on an actual workpiece, let it run for a while. Watch for vibration or wobbling that could indicate improperly installed bit.
11. Be careful of the bit rotating direction and the feed direction.
12. Do not leave the tool running. Operate the tool only when hand-held.
13. Always switch off and wait for the bit to come to a complete stop before removing the tool from workpiece.
14. Do not touch the bit immediately after operation; it may be extremely hot and could burn your skin.
15. Do not smear the tool base carelessly with thinner, gasoline, oil or the like. They may cause cracks in the tool base.
16. Draw attention to the need to use cutters of the correct shank diameter and which are suitable for the speed of the tool.
17. Some material contains chemicals which may be toxic. Take caution to prevent dust inhalation and skin contact. Follow material supplier safety data.
18. Always use the correct dust mask/respirator for the material and application you are working with.

SAVE THESE INSTRUCTIONS.

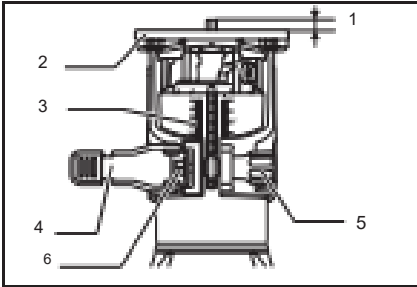
WARNING:

DO NOT let comfort or familiarity with product (gained from repeated use) replace strict adherence to safety rules for the subject product. MISUSE or failure to follow the safety rules stated in this instruction manual may cause serious personal injury.

CAUTION:

Always be sure that the tool is switched off and unplugged before adjusting or checking the tool.

Adjusting cutting depth

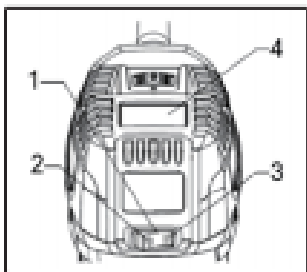


- 1. Cutting depth
- 2. Tool base
- 3. Scale
- 4. Locking lever
- 5. Adjusting screw
- 6. Hex nut

You can set the depth of cut using the scale marked on the side of the router.

To adjust the cutting depth, loosen the locking lever and move the tool base up or down as desired by turning the adjusting screw. After adjusting, tighten the locking lever firmly to secure the tool base.

Switch



- 1. Switch
- 2. OFF (O) side
- 3. ON (I) side
- 4. Speed display

CAUTION:

This is a rocker ON/OFF switch.

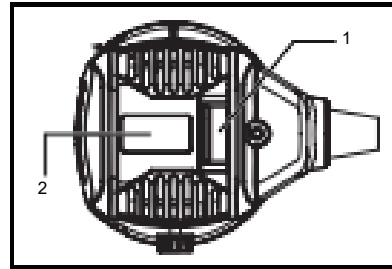
To start the tool, press the "ON (I)" side. To stop the tool, press the "OFF (O)" side.

Electronic control function

Electronic Speed Control maintains constant speed under heavy load.

Soft Start feature gradually increases speed for a smoother start up process.

Variable speed & LED display



- 1. Variable speed dial
- 2. LED display

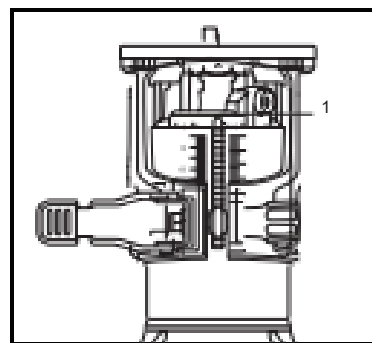
The tool speed can be changed by turning the speed adjusting dial to any one of six speeds.

- Speed at 1 : 13,000/min
- Speed at 2 : 17,000/min
- Speed at 3 : 22,000/min
- Speed at 4 : 29,000/min
- Speed at 5 : 31,000/min
- Speed at 6 : 33,000/min

CAUTION:

Please avoid prolonged low speed operation which can cause over heating and possible motor damage.

LED work lights



- 1. LED work lights

The LED work light illuminates the work area and alerts user of power to the tool.

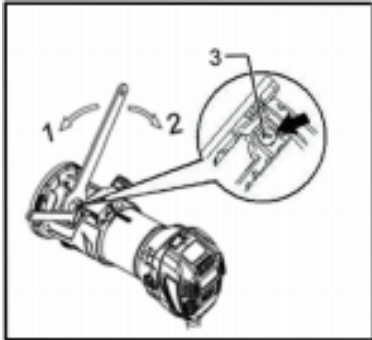
OPERATION

ASSEMBLY

CAUTION:

1. Always be sure that the tool is switched off and unplugged before making any adjustments.

Installing or removing bit

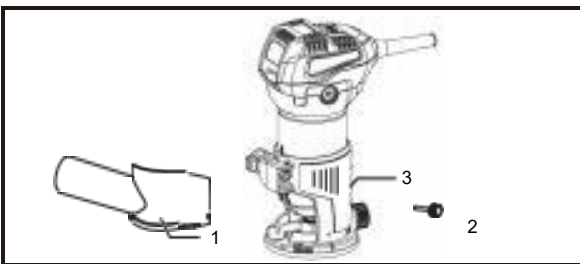


1. Tighten
2. Loosen
3. Shaft lock

CAUTION:

Do not tighten the collet nut without inserting a bit, or the collet cone will break. Use only the wrenches provided with the tool. Insert the bit all the way into the collet cone and tighten the collet nut securely with the two wrenches or by pressing the shaft lock and using the provided wrench. To remove the bit, follow the installation procedure in reverse.

Dust Hood Installation



1. Dust hood
2. Thumb screw
3. Router base

Locate dust hood

As shown in above diagram, place hood to the bottom right until the holes line up Insert and tighten thumb screw, Check to ensure attachment is secure, then attach a vacuum hose (not included)

General Operating Instructions

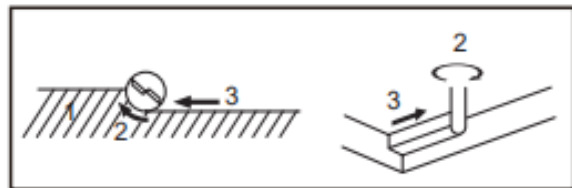
Run the tool for about 15 seconds, prior to beginning your project, to ensure that all moving parts are running smoothly, and there are no loose parts, rattles, or sparking that would indicate damage. Be sure the bit is firmly and properly installed before use. Improperly installed bits may eject suddenly at high speed from the Router, resulting in personal injury.

OPERATION

(1) Using the fixed base

Set the tool base on the workpiece without the bit making any contact. Then, turn the tool on and move the tool slowly forward over the workpiece surface. For best results, be sure to keep the tool base flush and advance smoothly until the cutting is complete.

When doing edge cutting, the workpiece surface should be on the left side of the bit in the feed direction.



1. Workpiece
2. Bit revolving direction
3. Feed direction

CAUTION:

This section explains how to help keep your router from over heating. Over heating can cause possible motor damage.

The depth of cut should not exceed 1/8" per pass

If a deeper cut is required, increase the cut depth on the router, but only 3mm each time, repeat procedure until desired depth is reached.

NOTE:

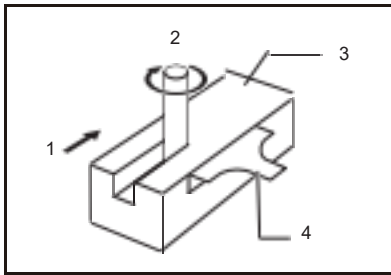
Other things to look for:

Moving the tool too quickly may result in a poor cut, or damage to the bit.

Moving too slowly may burn or mar the cutting material Keep in mind each cut will be different; depending on type of wood used, thickness of wood; whether it is a soft or hard wood, etc. Before getting started, always make a practice cut on wood scraps.

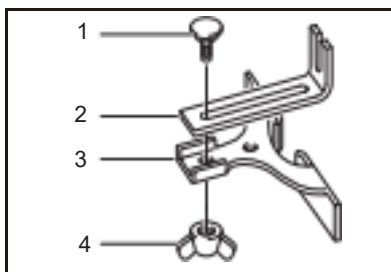
OPERATION

(2) Using the straight guide

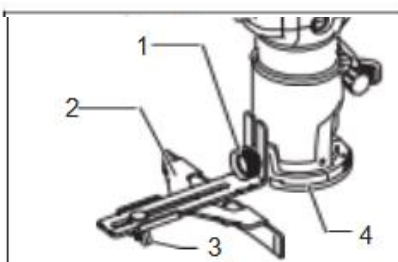


1. Feed direction
2. Bit revolving direction
3. Work piece
4. Straight guide

The straight guide is effectively used for straight cuts when chamfering or grooving. Attach the guide plate to the straight guide with the bolt and the wing nut.

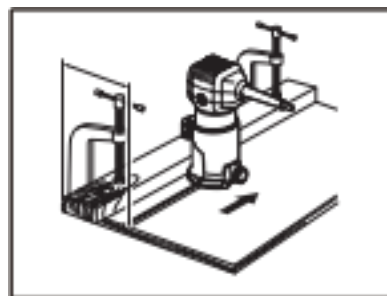


Attach the straight guide with the clamp screw (1). Loosen the wing nut on the straight guide and adjust the distance between the bit and the straight guide. At the desired distance, tighten the wing nut securely.



1. Clamp screw
2. Straight guide
3. Wing nut
4. Base

When cutting, move the tool with the straight guide flush with the side of the workpiece. If the distance between the side of the workpiece and the cutting position is too wide for the straight guide, or if the side of the workpiece is not straight, the straight guide cannot be used. In this case, firmly clamp a straight edge to the workpiece and use it as a guide against the router base. Feed the tool in the direction of the arrow.



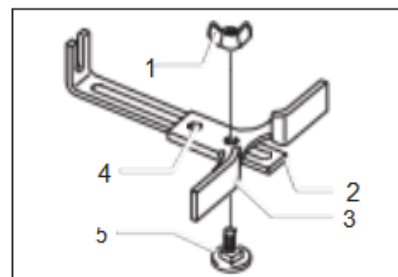
(3) Circular Work

Circular work may be accomplished if you assemble the straight guide and guide plate as shown below. Min. and max. radius of circles to be cut (distance between the center of the circle and the center of the bit) are as follows:

Min.: 2-1/2"

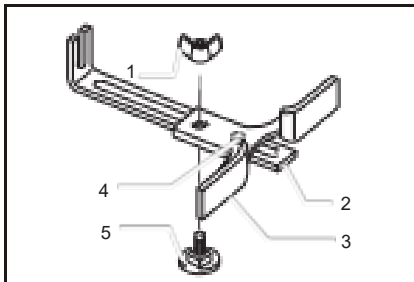
Max.: 8-11/16"

For cutting circles between 2-1/2" and 4-5/8" in radius.



1. Wing nut
2. Guide plate
3. Straight guide
4. Centre hole
5. Bolt

For cutting circles between 4-5/8" and 8-11/16" in radius.

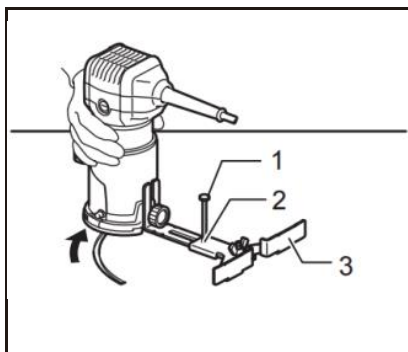


1. Wing nut
2. Guide plate
3. Straight guide
4. Centre hole
5. Bolt

NOTE:

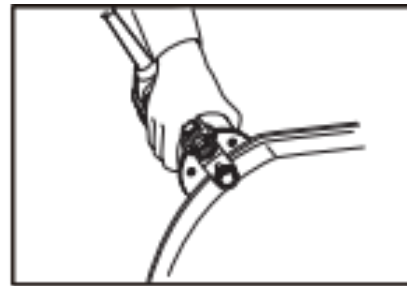
Circles between 6-3/4" and 7-5/16" in radius cannot be cut using this guide (because Centre hole(4) is blocked).

Align the centre hole in the straight guide with the centre of the circle to be cut. Drive a nail less than 1/4" in diameter into the centre hole to secure the straight guide. Pivot the tool around the nail in clockwise direction.

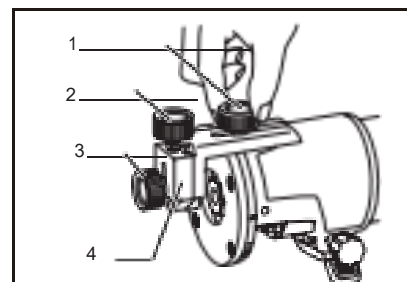


1. Nail
2. Centre hole
3. Straight guide

(4) Using the roller guide

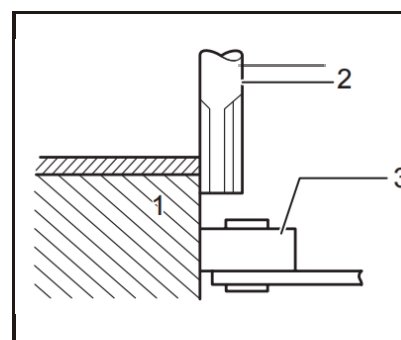


Edging curved cuts in veneers for furniture and the like can be done easily with the roller guide. The guide roller rides the curve and assures a fine cut. Install the roller guide on the tool base with the clamp screw (1). Loosen the clamp screw (2) and adjust the distance between the bit and the roller guide by turning the adjusting screw (3/64" per turn). At the desired distance, tighten the clamp screw (3) to secure the roller guide in place.



1. Clamp screw
2. Adjusting screw
3. Clamp screw
4. Roller guide

When cutting, move the tool with the guide roller riding the side of the workpiece.

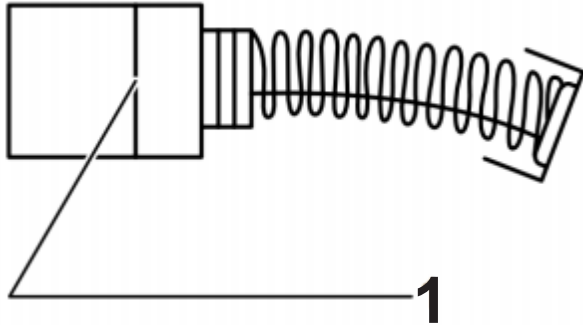


1. Workpiece
2. Bit
3. Guide roller

CAUTION:

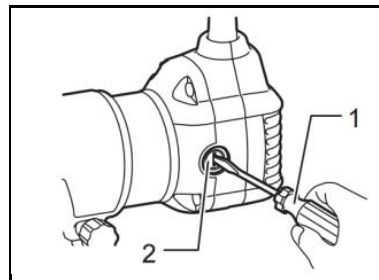
- Always be sure that the tool is switched off and unplugged before attempting to perform inspection or maintenance.

Replacing Carbon Brushes



1. Limit mark

Remove and check the carbon brushes regularly. Replace when they wear down to the limit mark. Keep the carbon brushes clean and free to slip in the holders. Both carbon brushes should be replaced at the same time. Use only identical carbon brushes. Use a screwdriver to remove the brush holder caps. Take out the worn carbon brushes, insert the new ones and secure the brush holder caps.



1. Screwdriver
2. Brush holder cap

To maintain product SAFETY and RELIABILITY, always use original replacement parts.

The Importer:
TOOLSAVE LTD

Unit C, Manders Ind. Est.,
Old Heath Road, Wolverhampton,
WV1 2RP.

Declare that the product:

Designation: 1/4" Digital Speed Trim Router

Model: TR710DS

Complies with the following Directives:

Supply of Machinery (Safety) Regulations 2008

Standards & technical specifications referred to:

**BS EN 62841-1:2015+AC:15+A11:2022
BS EN 62841-2-17:2017**

**Authorised Technical File Holder:
Bill Evans**

01/08/2025

The Director



