

ORIGINAL INSTRUCTION

TECHNICAL SPECIFICATION

Attention:

Please choose proper power source, voltage and frequencies that are shown in the label for your product.

Dust Collector	PDE1500
Motor Power	1500W
Max. Air Suction Capacity	2500 m ³ /h
Max. Static Pressure	2600 Pa
Inlet Port Diameter	125mm
Inlet Adapter Diameter	100mm x2
Dust Bag Capacity (Clear Plastic)	205 L
Canister Filter Size (Diameter x Length)	510 X 610mm (20" x 24")

SAFETY

WARNING: Read these Operating Instructions carefully. Familiarise yourself with the controls and use of the machine. Keep the Operating Instructions for future reference. The warning labels with instructions attached to the machine provide important information on safe operation.

1. **READ** and become familiar with the entire Operator's Manual. **LEARN** the machine's application, limitations and possible hazards.
2. **KEEP GUARD IN PLACE** and in working order.
3. **REMOVE ADJUSTING TOOLS.** Form a habit of checking to see that the keys, adjusting wrenches or any other tools are removed from the machine before turning ON.
4. **KEEP WORK AREA CLEAN.** Cluttered areas and benches invite accidents.
5. **DON'T USE IN DANGEROUS ENVIRONMENT.** Don't use machinery in damp or wet locations, or expose them to rain. Keep work area well lit.
6. **KEEP CHILDREN AWAY.** All visitors should be kept at a safe distance from work area.
7. **MAKE THE WORKSHOP CHILDPROOF** with padlocks.
8. **DON'T FORCE THE MACHINE.** It will do the job better and safer at the rate for which it was designed.
9. **USE THE RIGHT TOOL.** Do not force the tool or attachment to do a job of which it was not designed.
10. **USING AN EXTENSION CORD.** Make sure your extension cord is in good condition. When using an extension cord, be sure to use one heavy enough to carry the current your product will draw. An under sized cord will result in a drop in line voltage and in loss of power that will cause the tool to overheat.
11. **WEAR PROPER APPAREL.** Do not wear loose clothing, gloves, neck ties, rings, bracelets, or other jewelry that may get caught in moving parts. Non-slip footwear is recommended. Wear protective hair covering to contain long hair.
12. **ALWAYS WEAR EYE PROTECTION.** Wear goggles for protection against projected chippings.
13. **DON'T OVERREACH.** Keep proper footing and balance at all times.
14. **MAINTAIN WITH CARE.** Follow all maintenance instructions and lubrication schedules to keep the machine in good working condition. A machine that is improperly maintained could malfunction, leading to serious personal injury or death.
15. **DISCONNECT POWER FIRST** before servicing; when changing the belt or other part.
16. **USE RECOMMENDED ACCESSORIES.** Consult the Operator's Manual for recommended accessories. The use of improper accessories may cause serious injury.

17. **NEVER STAND ON THE MACHINE.** Serious injury could occur if the machine is tipped or if the cutting tool is unintentionally contacted.
18. **CHECK FOR DAMAGED PARTS.** Before further use of the tool, a guard or other part that is damaged should be carefully checked to determine that it will operate properly and perform its intended function: check for alignment of moving parts, binding of moving parts, breakage of parts, mounting, and any other conditions that may affect its operation. A guard or other part that is damaged should be properly repaired or replaced.
19. **NEVER LEAVE THE TOOL RUNNING UNATTENDED. TURN POWER "OFF".** Don't leave the tool until it has come to a complete stop.
20. **BE CAREFUL.** Pay attention to what you are doing. Work reasonably. Do not use the machine when you are tired.
21. **HAVE YOUR MACHINE REPAIRED BY AN EXPERT.** This machine meets the applicable safety provisions. Any repairs may be executed by an expert, using original spare parts; otherwise, the user could face a risk of injury.
22. **STABLE MACHINE.** Unexpected movement during operation greatly increases risk of injury or loss of control. Before starting, verify machine is stable and the mobile base (if used) is locked.
23. **HAZARDOUS DUST.** Dust created by machinery operations may cause cancer, birth defects, or long-term respiratory damage. Be aware of dust hazards associated with each workpiece material. Always wear a proper respirator to reduce your risk.
24. **HEARING PROTECTION.** Always wear hearing protection when operating or observing loud machinery. Extended exposure to this noise without hearing protection can cause permanent hearing loss.

SPECIFIC SAFETY INSTRUCTIONS FOR DUST COLLECTORS

1. This dust collector is designed and intended for use by properly trained and experienced personnel. If you are not familiar with the proper and safe operation of a dust collector, do not use until proper training and knowledge have been obtained.
2. Do not use the dust collector for anything except wood dust. Materials such as liquids, metal shavings, metal dust, screws, glass, plastic or rock can cause sparks and/or damage when coming into contact with any part of the dust collector.
3. To reduce risk of entanglement or contact with impeller, DO NOT place hands, hair, clothing, or tools in or near open dust collection inlet during operation, and keep small animals and children away. The powerful suction could easily pull them into impeller.
4. When emptying bag or drum, wear a respirator and safety glasses. Empty dust away from ignition sources and into approved container.
5. Only operate dust collector in locations that contain fire suppression systems or have a fire extinguisher nearby.
6. To reduce risk of fire or explosions caused by sparks from static electricity, ground all ducting using grounding wire.
7. Never suck up into the machine any inflammable or explosive solvents, or liquids like petrol, oil, alcohol, thinners, or small particles (such as metal filings or ash) that may be hotter than 60°C - otherwise there is danger of explosion or fire.
8. You are not allowed to use the appliance in the vicinity of inflammable gases or substances.

ELECTRICAL REQUIREMENTS

POWER SUPPLY AND MOTOR SPECIFICATIONS

WARNING: To avoid electrical hazards, fire hazards, or damage to the tool, use proper circuit protection. Use a separate electrical circuit for your tools. To avoid shock or fire, if power cord is worn cut, or damaged in any way, have it replaced immediately.

GROUNDING INSTRUCTIONS

WARNING: This tool must be grounded while in use to protect the operator from electrical shock.

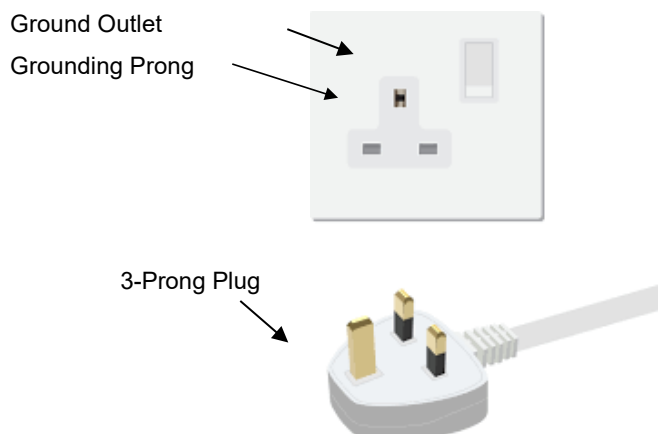
IN THE EVENT OF A MALFUNCTION OR BREAKDOWN, grounding provides a path of least resistance for electric current and reduces the risk of electric shock. This tool is equipped with an electric cord that has an equipment grounding conductor and a grounding plug. The plug **MUST** be plugged into a matching receptacle that is properly installed and grounded in accordance with ALL local codes and ordinances.

DO NOT MODIFY THE PLUG PROVIDED. If it will not fit the receptacle, have the proper receptacle installed by a qualified electrician.

IMPROPER CONNECTION of the equipment grounding conductor can result in risk of electric shock. The conductor with green insulation (with or without yellow stripes) is the equipment grounding conductor. If repair or replacement of the electric cord or plug is necessary, **DO NOT** connect the equipment grounding conductor to a live terminal.

CHECK with a qualified electrician or service person if you do not completely understand the grounding instructions, or if you are not sure the tool is properly grounded.

Refer to picture:



WARNING: Improper connection of an equipment grounding conductor can result in the risk of electrical shock. Equipment should be grounded while in use to protect operator from electrical shock.

WARNING: This machine is for indoor use only. Do not expose to rain or use in damp locations.

WARNING: The dust collection system includes the dust collector and the hose, or ductwork you use to connect the tools. The dust collector is grounded through the ground wire in the cord. The hose or ductwork you use to connect the tool to the dust collector must also be grounded.

GUIDELINES FOR EXTENSION CORDS

USE THE CORRECT EXTENSION CORD. Make sure your extension cord is in good condition. When using an extension cord, be sure to use one heavy enough to carry the current your product will draw. An undersized cord will cause a drop in line voltage, resulting in loss of power and cause overheating.

Be sure your extension cord is properly wired and in good condition. Always replace a damaged extension cord or have it repaired by a qualified person before using it. Protect your extension cords from sharp objects, excessive heat damp or wet areas.

ACCESSORIES AND ATTACHMENTS

RECOMMENDED ACCESSORIES

WARNING: To avoid injury:

- Use only accessories recommended for the machine.
- Follow instructions that accompany accessories. Use of improper accessories may cause hazards.
- Use only accessories designed for this machine to avoid injury from thrown broken parts or workpieces.
- Do not use any accessory unless you have completely read the instruction's manual for that accessory.

PACKING BOX CONTENTS

UNPACKING AND CHECKING CONTENTS

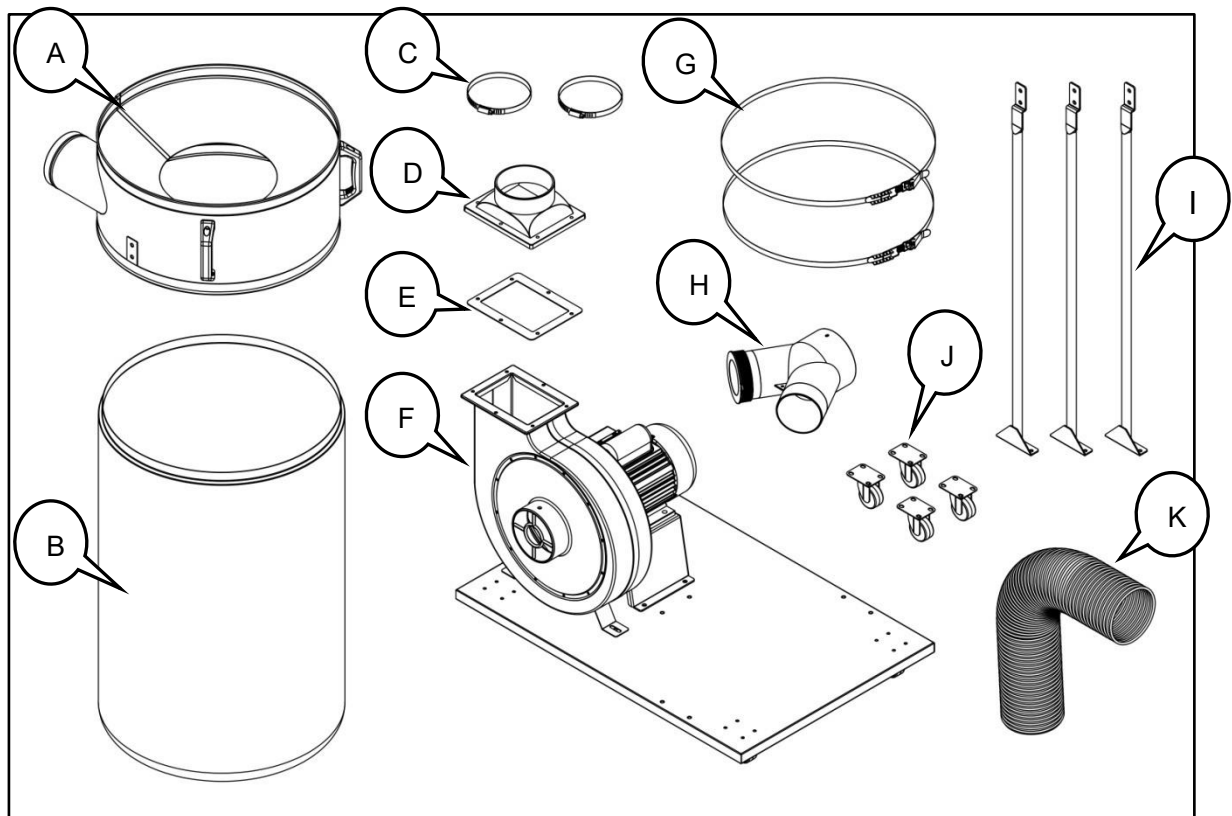
Carefully unpack the machine and all its parts, and compare against the illustration following.

WARNING:

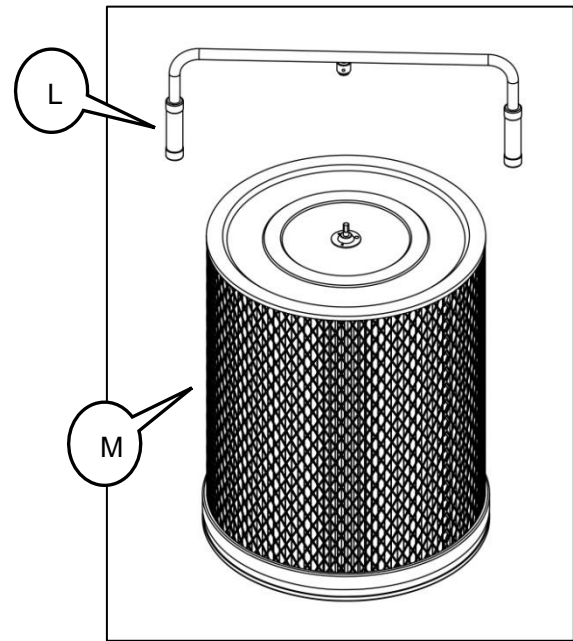
- To avoid injury from unexpected starting, do not plug the power cord into a power source receptacle during unpacking and assembly. This cord must remain unplugged whenever you are assembling or adjusting the machine.
- If any part is missing or damaged, do not plug the machine in until the missing or damaged part is replaced, and assembly is complete.

TABLE OF LOOSE PARTS

Check your machine to see parts listed below:



A. Separation housing	X1
B. Dust collection bag (plastic)	X1
C. Hose clamp	X2
D. Dust export	X1
E. Rubber gasket	X1
F. Motor, impeller and base assembly	X1
G. Bag and filter clamp	X2
H. Y adapter with cover	X1
I. Support leg	X3
J. Caster	X4
K. Hose	X1
L. Cleaning handle	X1
M. Canister filter	X1

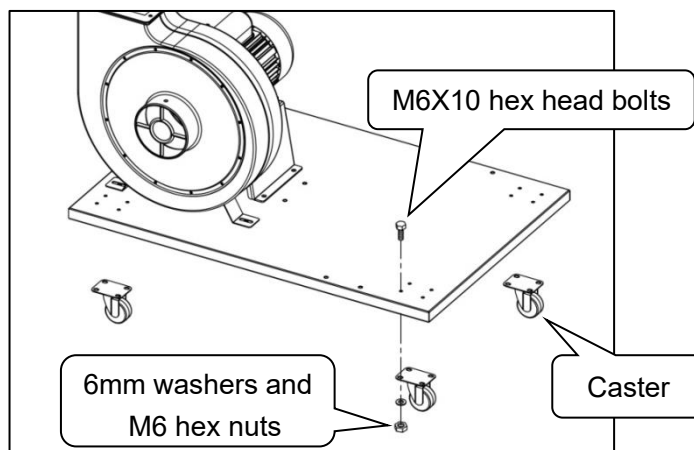


Hardware bag (not shown)

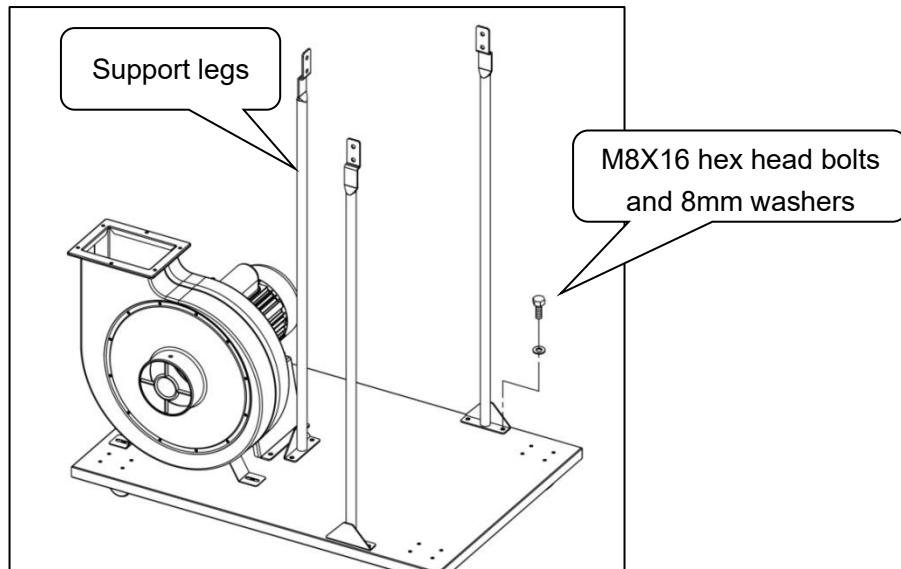
M6X10 Hex head bolt	X16
6mm Flat washer	X16
M6 Hex nut	X16
M6X16 Hex head bolt	X6
6mm Flat washer	X6
M6 Hex nut	X6
M8X16 Hex head bolt	X12
8mm Flat washer	X12
10-13mm Open end wrench	X1

ASSEMBLY

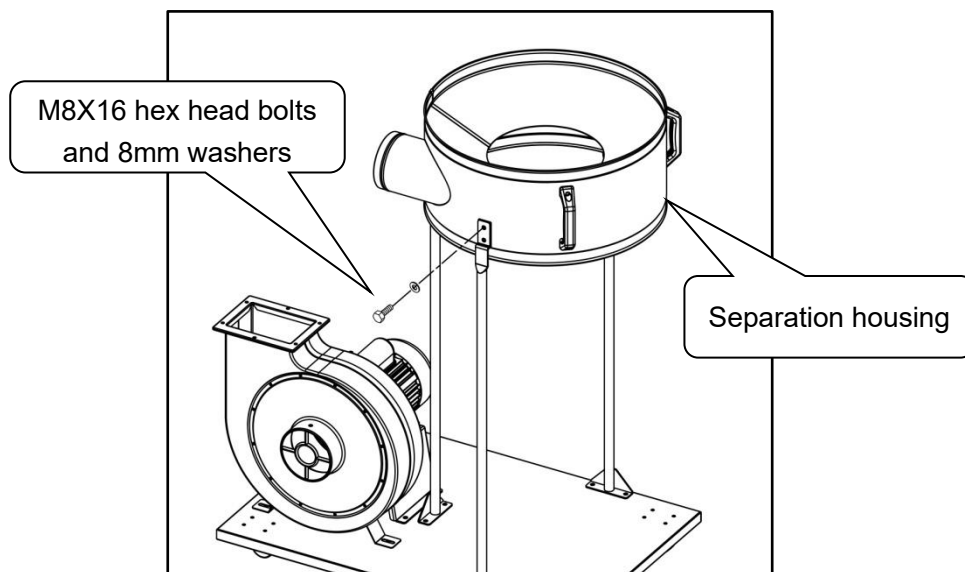
1. Assemble four casters to the base by using M6x10 hex head bolts, 6mm flat washers and M6 hex nuts.



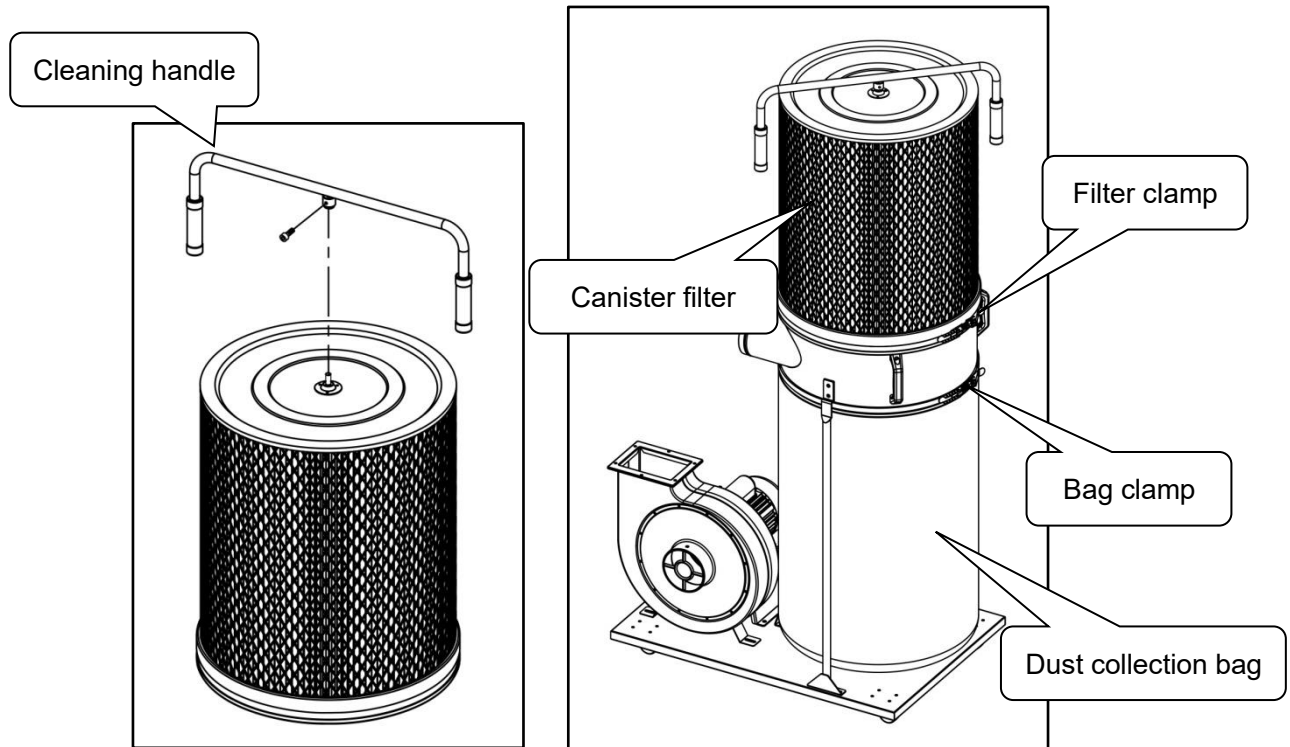
2. Attach three support legs to the base by using M8X16 hex head bolts and 8mm flat washers.



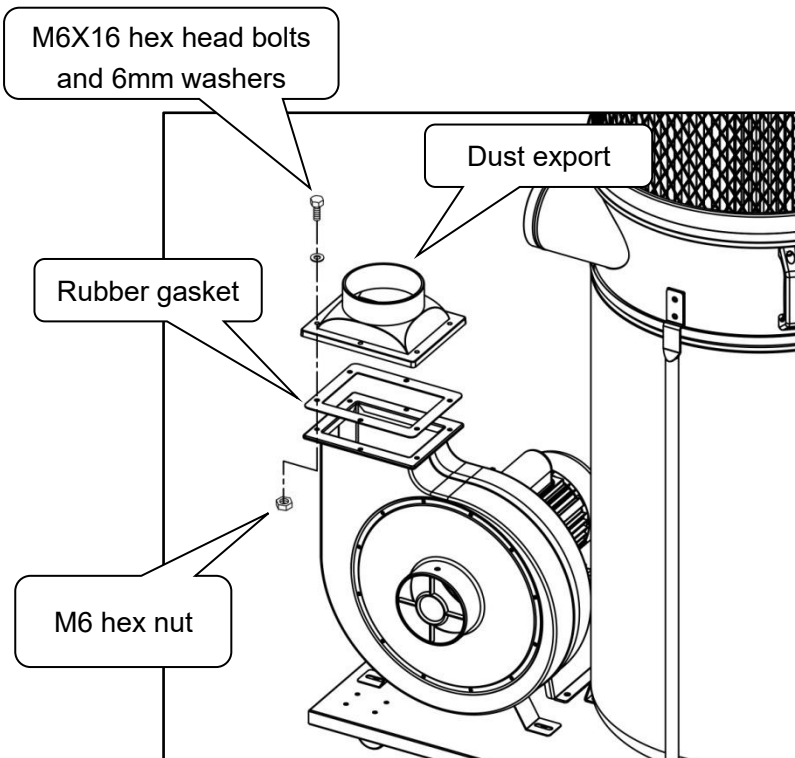
3. Install the separation housing to the three support legs with M8X16 hex head bolts and 8mm flat washers.



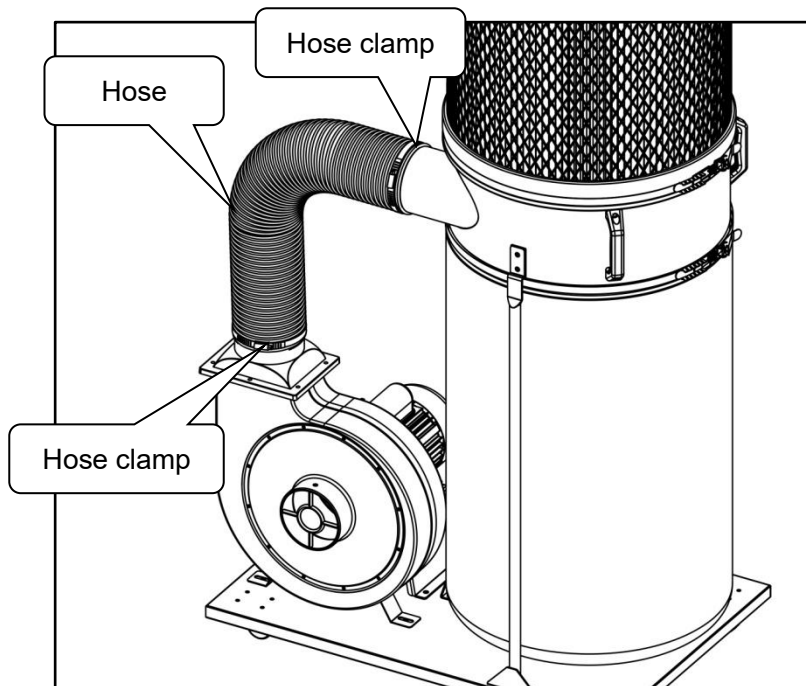
4. Attach the cleaning handle onto the shaft of canister filter, tighten hex head bolt. Install the canister filter assembly and dust bag to the upper and lower port of separation housing with the clamp.



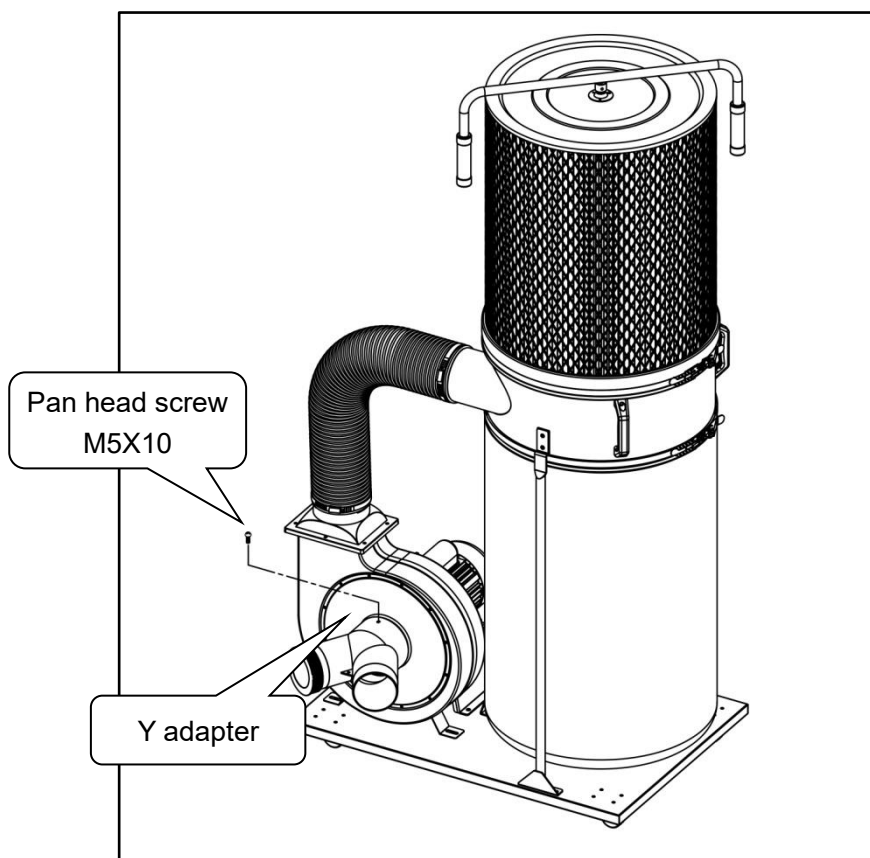
5. Place a rubber gasket around the impeller outlet rim, Secure the dust export to the impeller outlet with M6X16 hex head bolts, 6mm Flat washers and M6 hex nuts.



6. Attach the hose between the separation housing and the impeller housing with two clamps. Tighten the clamps to secure the hose.



7. Install the Y adapter over the impeller intake hole, then secure it in place with the M5X10 pan head screw.



OPERATION

Once the assembly is complete, test run your dust collector to make sure it runs properly and is ready for regular operation.

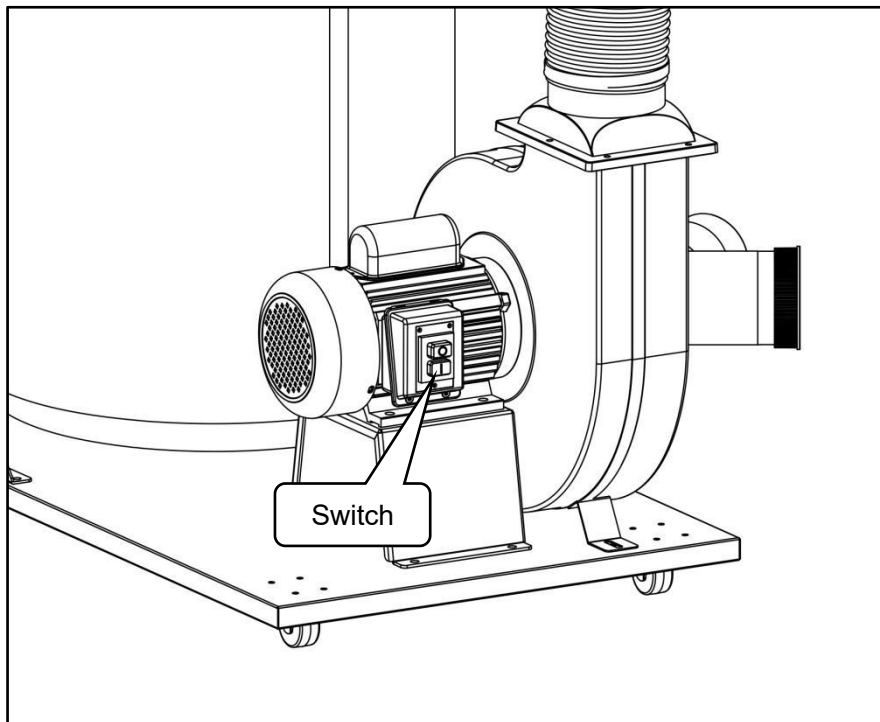
Connect the machine to power.

Verify that the machine is operating correctly by turning the switch ON.

When running normally, the machine runs smoothly without abnormal vibration or impact noise.

Use the proper type hose and adapter to connect the dust collector to the machine will be operated.

Operating a dust collector is simple and straight forward. Turn the dust collector ON, then turn the dust producing machine ON. When you are finished with the machine operation, turn the machine OFF, then turn the dust collector OFF.



MAINTENANCE

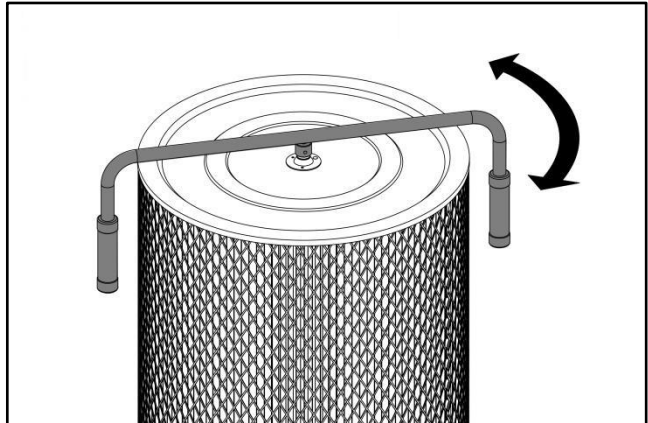
Warning: Turn off the machine and disconnect from the power supply before conducting maintenance work or settings.

Cleaning the Canister Filter

Clean the canister filter and dust collection bag frequently to keep the collector's performance at its optimum.

To clean the canister filter:

1. Disconnect the machine from the power source.
2. Rotate the cleaning handle clockwise and counterclockwise several times to free the trapped dust particles from the filter pleats. The particles will fall into the collection bag.



The use of compressed air or liquids to clean the canister filter will damage the filtration pleats of the filter. Use ONLY the cleaning handle or, if necessary, use a soft brush to clean the inside of the canister filter.

Replacing the Dust Collection Bag

Always empty or replace the dust collection bag on a regular basis. Emptying the collection bags allows the machine to operate at a much higher level of efficiency.

1. Disconnect the machine from the power source outlet.
2. Remove the collector bag by loosening the bag clamp.
3. Empty the contents into an appropriate container.
4. Replace the dust collection bag.

Warning: Always wear the appropriate respirator or dust mask and safety glasses when cleaning or emptying the bags. Small dust particles can escape the bags during emptying, causing them to become airborne and easily inhaled. This microscopic air borne dust is extremely unhealthy to breathe and can cause serious health problems.

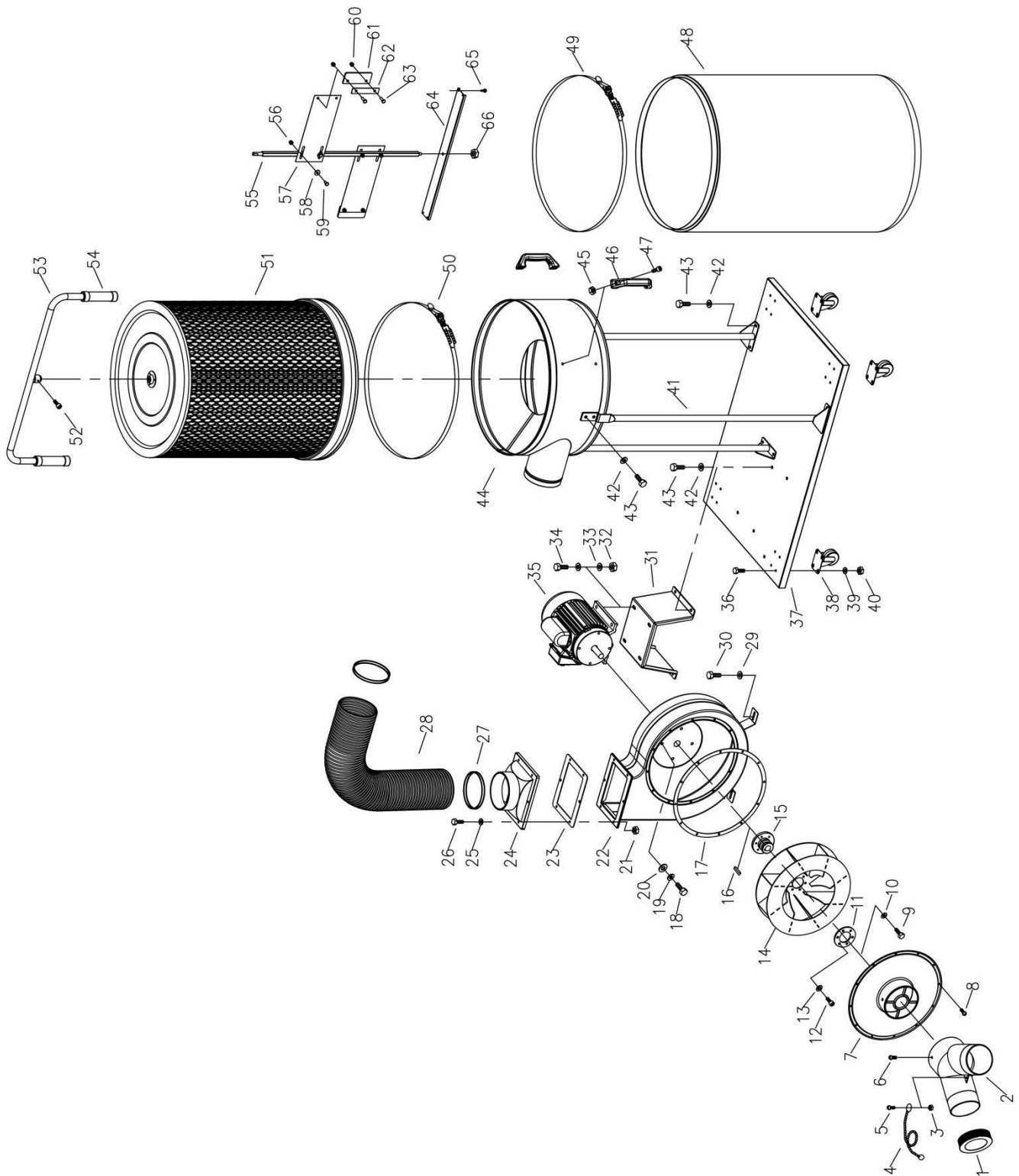
Machine care

- Usually check the condition of the power supply cords and replace them if they are broken, or even worse if the internal wires are shown.
- If you do not intend to use the machine for a long time, clean it and put it in a dry place if possible.
- Before each use, inspect the general condition of the dust collector. Check for loose screws, misalignment or binding of moving parts, cracked or broken parts, damaged electrical wiring, and any other condition that may affect its safe operation. If abnormal noise or vibration occurs, have the problem corrected before further use. Do not use damaged equipment.

TROUBLESHOOTING

PROBLEM	CAUSE	SOLUTION
Machine does not work	<ul style="list-style-type: none"> ● Defective motor, power cable or plug. ● Overload protector is tripped. ● Start capacitor is at fault. ● Wall fuse/circuit breaker is blown / tripped. ● Power switch is at fault. ● Motor is at fault. 	<ul style="list-style-type: none"> ● Specialized personnel should check the machine. ● Reset the overload protector. ● Test/replace. ● Ensure correct size for machine load; replace weak breaker. ● Replace faulty power switch. ● Test / repair / replace.
Machine has vibration or noisy operation	<ul style="list-style-type: none"> ● Motor, motor mount or another mounting component is loose or broken. ● Motor fan is rubbing on the fan cover. ● Impeller is loose or damaged and unbalanced. ● Bearings are at fault. 	<ul style="list-style-type: none"> ● Retighten. Use thread locking fluid if necessary. Replace stripped fasteners or damaged components if necessary. ● Replace dented fan cover; replace loose/damaged fan. ● Disconnect dust collector from power, and inspect the impeller for dents, bends. Replace the motor and impeller as a set if the motor shaft and the impeller hub are damaged. ● Test and replace bearing.
Sawdust being blown into the air from the dust collector.	<ul style="list-style-type: none"> ● Bag clamps are not properly clamped and secured. 	<ul style="list-style-type: none"> ● Re-secure bag clamps completely over the bags.
Dust collector does not adequately collect dust or chippings; poor performance.	<ul style="list-style-type: none"> ● Dust collection bag is full. ● Canister filter is clogged. ● Dust collector is too far away. ● Unused inlet port is not covered. 	<ul style="list-style-type: none"> ● Empty the dust collection bag. ● Clean the canister filter. ● Relocate the dust collector closer. ● Cover the unused inlet port.

ASSEMBLY DIAGRAM



PART LIST

No.	Description	QTY.
1	Inlet cover	1
2	Y adapter	1
3	Hex nut M5	2
4	Connection chain	1
5	Pan head screw M5X10	2
6	Pan head screw M5X10	1
7	Impeller cover	1
8	Pan head screw M5X10	12
9	Left thread hex head bolt M6X25	1
10	Washer	1
11	Clamping plate	1
12	Socket head screw M6X16	6
13	Lock washer 6mm	6
14	Impeller	1
15	Flange	1
16	Key 6x6x40mm	1
17	Rubber gasket ring	1
18	Hex head bolt M8X16	4
19	Lock washer 8mm	4
20	Flat washer 8mm	4
21	Hex nut M6	6
22	Impeller house	1
23	Rubber gasket plate	1
24	Dust export	1
25	Flat washer 6mm	6
26	Hex head bolt M6X16	6
27	Hose clamp	2
28	Hose	1
29	Flat washer	2
30	Hex head bolt M8X16	2
31	Motor support plate	1
32	Hex nut M8	4
33	Flat washer 8mm	8

No.	Description	QTY.
34	Hex head bolt M8X25	4
35	Motor	1
36	Hex head bolt M6X10	16
37	Base	1
38	Caster	4
39	Flat washer 6mm	16
40	Hex nut M6	16
41	Support leg	3
42	Flat washer 8mm	16
43	Hex head bolt M8X16	16
44	Separation housing	1
45	Hex nut M6	4
46	Handle	2
47	Socket head screw M6X16	4
48	Dust collection bag	1
49	Filter clamp	1
50	Bag clamp	1
51	Canister filter	1
52	Hex head bolt M6X10	1
53	Cleaning handle	1
54	EVA form handle grip	2
55	Central axis	1
56	Lock nut M6	4
57	Spring plate	2
58	Flat washer 6mm	4
59	Hex head bolt M6X20	4
60	Lock nut M6	4
61	Rubber block	2
62	Fixing plate	2
63	Hex head bolt M6X14	4
64	Central axis support plate	1
65	Self-tapping screw 4.2-1.4X13mm	4
66	Lock nut M8	1

The Importer:
TOOLSAVE LTD

Unit C, Manders Ind. Est.,
Old Heath Road, Wolverhampton,
WV1 2RP.

Declare that the product:

Designation: Professional Dust Collector

Model: PDE1500

Complies with the following Directives:
Standards & technical specifications referred to:

EC Council Directive 2006/42/EC Machinery

Report No. 4840324272800

**Tested
according to:**

EN IEC 55014-1:2021
EN IEC 55014-2:2021
EN IEC 61000-3-2:2019/A1:2021
EN IEC 61000-3-11:2019

Authorised Technical File Holder: Bill Evans

25/08/2024 The Director

