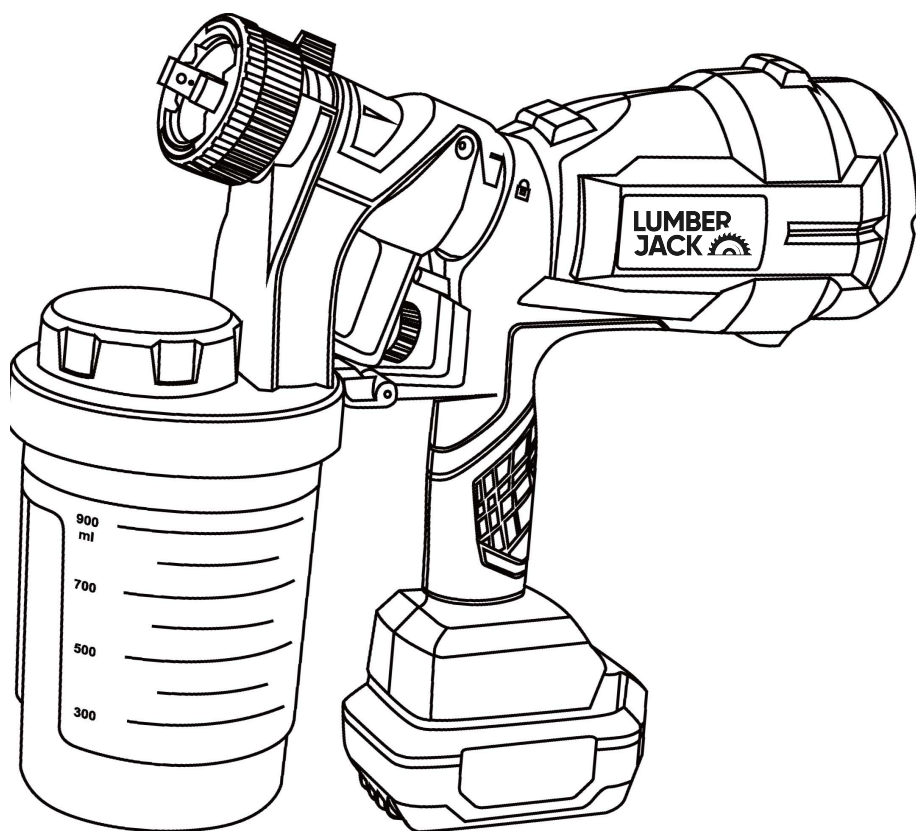


**XP SERIES**

**LSG900ML**

**LUMBER  
JACK** 

**20V Spray Gun**



**OPERATOR'S MANUAL**



## General Power Tool Safety Warnings

**⚠ WARNING :** Read all safety warnings and instructions. Failure to follow the warnings and instructions may result in electric shock, fire and/or serious injury.

### Save all warnings and instructions for future reference.

The term " power tool " in the warnings refers to your mains-operated (corded) power tools or battery-operated (cordless) power tools.

### 1.Work Area Safety

- a.Keep work area clean and well lit.** Cluttered or dark areas invite accidents.
- b.Do not operate power tools in explosive atmospheres, such as in the presence of flammable liquids, gases or dust.** Power tools create sparks which may ignite the dust or fumes.
- c.Keep children and bystanders away while operating a power tool.** Distractions can cause you to lose control.

### 2.Electrical Safety

- a.Power tool plugs must match the outlet.** Never modify the plug in any way. Do not use any adapter plugs with grounded power tools. Unmodified plugs and matching outlets will reduce risk of electric shock.
- b.Avoid body contact with grounded surfaces such as pipes,radiators, ranges and refrigerators.** There is an increased risk of electric shock if your body is grounded.
- c.Do not expose power tools to rain or wet conditions.** Water entering a power tool will increase the risk of electric shock.
- d.Do not abuse the cord.** Never use the cord for carrying, pulling or unplugging the power tool. Keep cord away from heat, oil, sharp edges or moving parts. Damaged or entangled cords increase the risk of electric shock.
- e.When operating a power tool outdoors, use an extension cord suitable for outdoor use.** Use of a cord suitable for outdoor use reduces the risk of electric shock.
- f.If operating a power tool in a damp location is unavoidable, use a residual current device (RCD) protected supply.**Use of a RCD reduces the risk of electric shock.

**⚠ NOTE** :The term residual current device (RCD) may be replaced by the term ground fault circuit interrupter (GFCI) or earth leakage circuit breaker (ELCB).

### **3. Personal Safety**

- a. Stay alert, watch what you are doing and use common sense when operating a power tool. Do not use a power tool while you are tired or under the influence of drugs, alcohol or medication. A moment of inattention while operating power tools may result in serious personal injury.
- b. Use personal protective equipment. Always wear eye protection. Protective equipment such as dust mask, non-skid safety shoes, hard hat, or hearing protection used for appropriate conditions will reduce personal injuries.
- c. Prevent unintentional starting. Ensure the switch is in the off-position before connecting to power source and/or battery pack, picking up or carrying the tool. Carrying power tools with your finger on the switch or energising power tools that have the switch on invites accidents.
- d. Remove any adjusting key or wrench before turning the power tool on. A wrench or a key left attached to a rotating part of the power tool may result in personal injury.
- e. Do not overreach. Keep proper footing and balance at all times. This enables better control of the power tool in unexpected situations.
- f. Dress properly. Do not wear loose clothing or jewellery. Keep your hair, clothing and gloves away from moving parts. Loose clothes, jewellery or long hair can be caught in moving parts.
- g. If devices are provided for the connection of dust extraction and collection facilities, ensure these are connected and properly used. Use of dust collection can reduce dust-related hazards.

### **4. Power Tool Use and Care**

- a. Do not force the power tool. Use the correct power tool for your application. The correct power tool will do the job better and safer at the rate for which it was designed.
- b. Do not use the power tool if the switch does not turn it on and off. Any power tool that cannot be controlled with the switch is dangerous and must be repaired.
- c. Disconnect the plug from the power source and/or the battery pack from the power tool before making any adjustments, changing accessories, or storing

power tools. Such preventive safety measures reduce the risk of starting the power tool accidentally.

d.Store idle power tools out of the reach of children and do not allow persons unfamiliar with the power tool or these instructions to operate the power tool. Power tools are dangerous in the hands of untrained users.

e.Maintain power tools. Check for misalignment or binding of moving parts, breakage of parts and any other condition that may affect the power tools operation. If damaged, have the power tool repaired before use. Many accidents are caused by poorly maintained power tools.

f.Keep cutting tools sharp and clean. Properly maintained cutting tools with sharp cutting edges are less likely to bind and are easier to control.

g.Use the power tool, accessories and tool bits etc. in accordance with these instructions, taking into account the working conditions and the work to be performed. Use of the power tool for operations different from those intended could result in a hazardous situation.

## **5.Battery Tool Use and Care**

a.Recharge only with the charger specified by the manufacturer. A charger that is suitable for one type of battery pack may create a risk of fire when used with another battery pack.

b.Use power tools only with specifically designated battery packs. Use of any other battery packs may create a risk of injury and fire.

c.When battery pack is not in use, keep it away from other metal objects, like paper clips, coins, keys, nails, screws or other small metal objects, that can make a connection from one terminal to another. Shorting the battery terminals together may cause burns or a fire.

d.Under abusive conditions, liquid may be ejected from the battery; avoid contact. If contact accidentally occurs, flush with water. If liquid contacts eyes, additionally seek medical help. Liquid ejected from the battery may cause irritation or burns.

e.Have your power tool serviced by a qualified repair person using only identical replacement parts. This will ensure that the safety of the power tool is maintained.

f.Always push the gear selector and turn the operating mode selector switch through to the stop. Otherwise, the machine can become damaged.

g.Working in especially dusty environments can lead to failure of the power tool.

**OPERATION GUIDELINES**

⚠ **NOTE:** Before using the tool, read the Instruc-tion book carefully.






**INTENDED USE**

The machine is intended for hammer drilling and chiseling in concrete, brick. It is also suitable for drilling without impact in wood, metal, ceramic and plastic.

**BEFORE PUTTING INTO OPERATION**

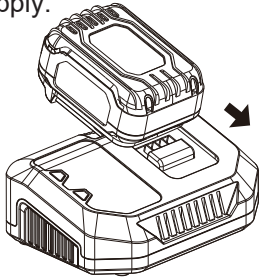
**CHARGING WITH DIAGNOSTIC CHARGER**

- 1.Connect the battery charger into the AC power supply.
- 2.Slide the raised ribs on the battery pack into the slots on the charger until the latches on each side of the battery pack snap in place.
- 3.Once the battery is properly attached, the LED's on the charger will be lit up and indicating the charging status.  
There are 5 different colour possibilities:

Description of LED display	Picture	Indicating Status	Charger Model
Steady red light		Charger is plugged in	2A/4A/6A
Steady red light + flashing green light		Battery is charging	2A/4A/6A
Steady red light + steady green light		Battery is fully charged	2A/4A/6A
Flashing red light		Battery pack is too hot	2A/4A/6A
Red and green light flashing alternatively		Battery pack is defective	2A/4A/6A

⚠ **NOTE!** In case of “defective” status, try remov-ing and inserting the battery again into the charger, and do the same with another new battery. If the same status remains, it may be the case that the defective item is the charger and not the battery.

- 4.Press the button on the battery pack and then slide it off from the charger to remove it.
- 5.Disconnect the charger from the power supply.

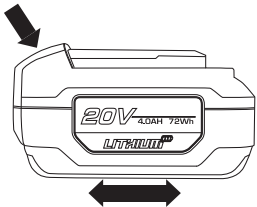


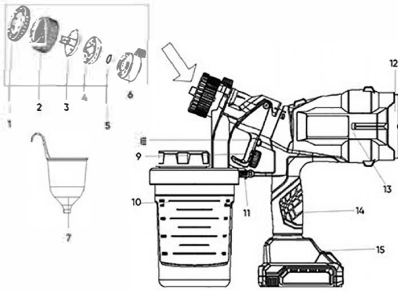
**CHARGING THE BATTERY PACK**

The battery pack charger supplied is matched to the Li-ion battery installed In the machine. Do not use other brand battery charger.  
The Li-ion battery pack is protected against deep discharging. When the battery pack is empty, the machine is switched off by means of a protective circuit: The chuck no longer rotates. In a warm, environment or after heavy use, the battery pack may become too hot to permit charging. Allow time for the battery pack to cool down before recharging.

**TO REMOVE OR INSTALL BATTERY PACK**

Depress the battery pack release button to release and slide the battery pack out from your tool. After recharge, slide it back Into your tool. A simple push and slight pressure will be sufficient.





## Spraying Material Preparation

0-1| ^Á• | æ ð \* Á@Á• | æ Á æ ð Á { • ó  
à^Ááá c^áÁ, á@Á@Á• | |ç^ | ó• ] ^8ää áÁà^Á  
@Á{ æ ð Á { æ ~ æç | ^ | Á Ö | Á } [ ó • ^Á  
• ] | æ ð \* Á { æ ð Á @Á ^ç^á• Á @Á  
• ] ^8ää áÁ{ æ ð ~ { Á ç & • æ Á

**NOTE: Do not use flammable spraying liquids.**

1. Çãð • ç \* Á } [ à
2. Þ ~ c
3. Þ [ :: | ^Á ~ æ á
4. Þ [ :: | ^
5. Û ^ ç Á ç \*
6. Çã Á | ^ { ^Á ^ ~ | æ |
7. Xã & • æ Á & ]
8. V | á \* ^ |
9. Ç | , Á ^ ~ | æ |
10. V æ \
11. V æ \ Á [ & Á [ , }
12. Çã Á ç ^ |
13. Ç æ Á ç • ^ { à |
14. Þ æ á | ^
15. Ó æ ^ | ^ Á æ



## TECHNICAL SPECIFICATIONS

Maximum viscosity	60 DIN/s
Rated voltage	20V DC
Rated power	280W
Tank capacity	900ml
Spraying distance	20cm
Spraying capacity	700ml/min
Nozzle diameter	2,5mm
Power source	2.0/4.0/6.0Ah Battery
Battery working duration	2.0Ah lasts for 10min 4.0Ah lasts for 20min 6.0Ah lasts for 30min
Material	PA6 and PP
Dimensions	350x125x300mm
Weight	1.3kg

1. T á Á@Á• | æ Á æ ð Á  
ó | [ ~ \* @ Á à ^ | ^Á & @ & á \* Á@  
ç á & • æ É
2. Ô | { | | ^ ç | Á { ^ | • Á@ Á ç á & • æ  
& ] Á Á@Á• | æ Á æ ð Á ç & ] ó | Á  
@Á Á | \ Á æ á
3. Š á Á@ Á | \ Á - Á@ Á ç á & • æ Á & ]  
æ á Á ^ & | á Á@ Á ç á Á ç Á ^ & ] á • D  
~ } ç Á@ Á ç ~ á Á Á@ Á ç á & • æ Á & ]  
@ Á | , ^ á Á / @ • ^ Á | á Á ^ • Á ç ^  
| ^ & { { ^ } á á Á ^ Á@ Á æ ð  
{ æ ~ æç | ^ | Á } | æ Á æ ð Á { • ó  
à^Ááç ^ÁÁ á@Á á Á ^ • @ | á | Á  
• ] | æ ð \* Á | Á | ^ ç ^ | ó æ ^  
& ] æ ð æ ó æ á • Á | { Á & [ \*\* á \*  
@Á [ :: | ^ É

## OPERATIONS

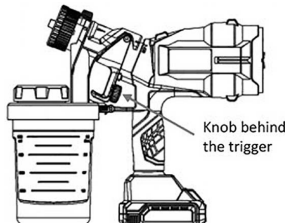
### Spraying methods

1. By turning the nozzle adjustment nut to various positions, the gun offers three types of spraying methods: round, horizontal flat round, vertical flat round. Users can adjust accordingly to achieve the ideal spraying results. Moreover, users can adjust the size and shape of **the spray by adjusting the airflow regulator**.

**NOTE:** When adjusting the trigger, it must be released to avoid danger. Never point the nozzle at people and animals.

### Adjusting the Flow Rate

The spray rate can be adjusted by turning the knob behind the trigger. The larger the discharge opening, the higher the spray rate.



### Spraying

Before the first spraying, the user should do some exercises on the discarded wood or cardboard to practice using the cordless paint sprayer.

### Pre-treat the surface to be sprayed

- The spraying result depends on how smooth and clean the surface is before spraying.
- Therefore, treat the surface carefully and keep it free of dust.
- Cover areas that do you not wish to spray.
- Correct spraying method

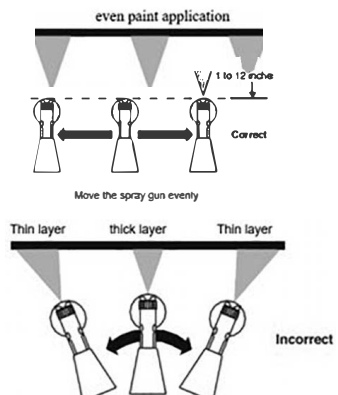
- The spray gun should be perpendicular to the surface when spraying.
- Users can choose a distance from the nozzle to the surface of 5 to 30 cm depending on the size of the spray pattern. In general, the greater the distance, the larger the spray pattern.
- Move the spray gun evenly parallel along the surface. Uniform guidance of the spray gun results in a uniform surface quality.

Generally, spray twice, the first spray may be slightly finer, and the second spray should be slightly coarser.


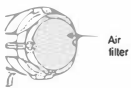
At the end of spraying, hold the gun close to the surface to avoid overspray.

Pull the trigger while spraying and release the trigger when finished spraying. When spraying the next coat, align the nozzle with the bottom edge of the previous spray and allow the edges to overlap slightly for better spraying.

Do not move the gun unevenly.



## MAINTENANCE

1.Remove the battery pack and the filter protector with a screwdriver.	
2.Remove the dirty filter and replace it with a new one. 3.Reinstall the filter guard.	 Air filter

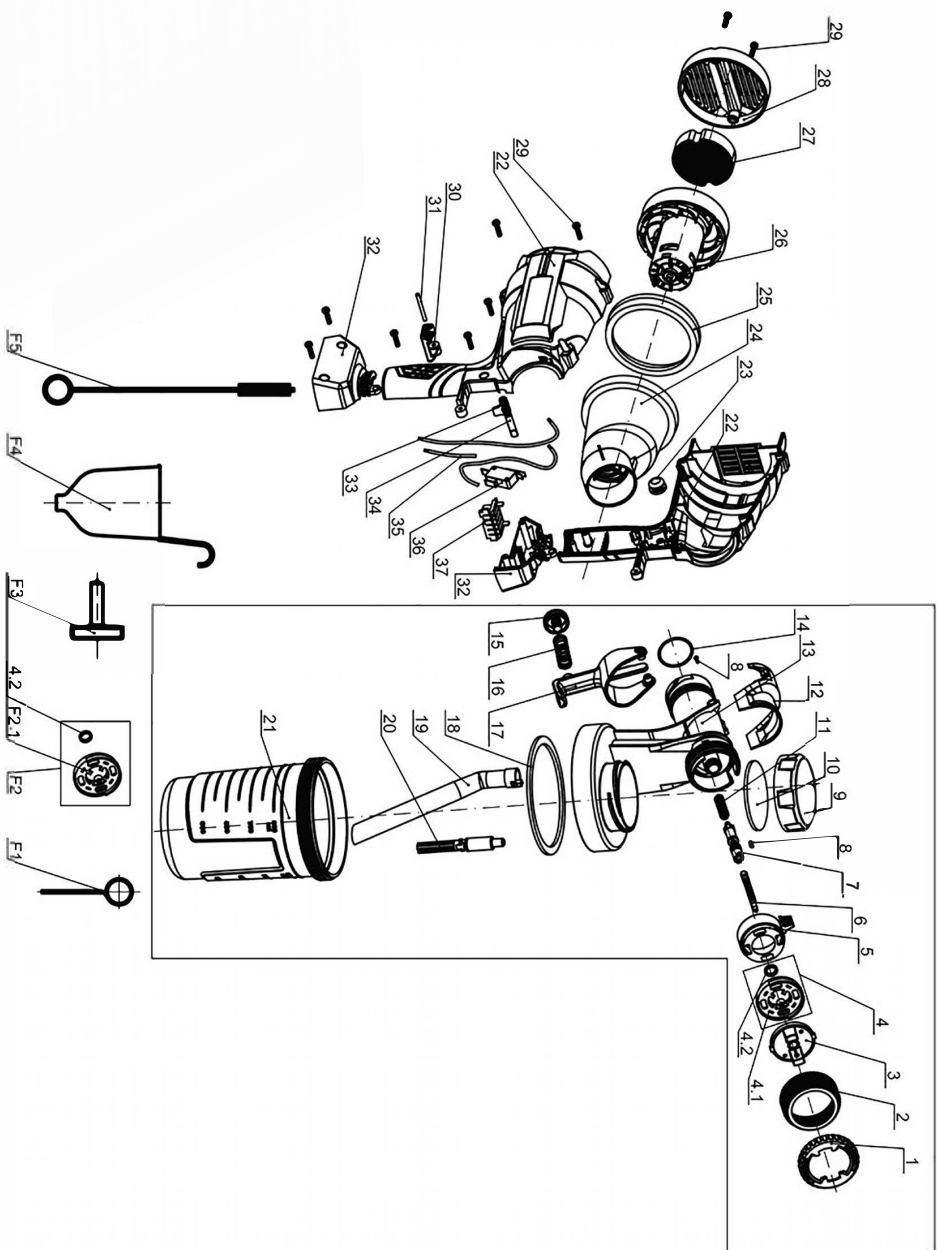
## TROUBLESHOOTING

Problem	Cause	Solution
Spraying with low flow or without flow	1.Clogged nozzle 2.Clogged suction tube 3.Flow regulator in low position 4.Loose suction tube 5.Loose tank 6.Clogged filter	1.Clean the nozzle 2.Clean the suction tube 3.Adjust the flow regulator 4.Tighten the suction pipe 5.Tighten the tank 6.Replace the filter
Dripping of spraying material	1.Loose nozzle 2.Damaged nozzle 3.Seal damaged nozzle 4.Spray material accumulated on the nozzle	1.Tighten the nozzle 2.Replace the nozzle 3.Replace the nozzle 4.Clean the nozzle
Poor spray atomisation	1.High viscosity of the spraying material 2.High flow rate of spraying material 3.Flow regulator in high position 4.Clogged nozzle 5.Clogged filter 6.Low pressure build-up in the tank	1.Dilute the spray material 2.Reduce the flow rate 3.Adjust the flow regulator 4.Clean the nozzle 5.Replace the filter 6.Tighten the tank
Spray fluctuation	1.Not enough spray material in the tank 2.Clogged filter	1.Refill the spraying material 2.Replace the filter
Suspension phenomenon of the spray material	Spraying too much material	Reduce the flow rate or move the gun faster
Over spraying	1.Large distance between spray gun and the surface 2.Large low rate of spray material	1.Reduce the distance 2.Reduce the flow rate
Spray pattern too thin	Move the spray gun too fast	Increase the flow rate or move the gun more slowly

## PARTS

Nº	Description	Qty.
1	Adjusting knob	1
2	Nut	1
3	Nozzle guard	1
4	Spray nozzle 4.1. Spray nozzle 4.2. Seal ring	1
5	Spray width adjustment knob	1
6	Valve needle	1
7	Valve lever	1
8	Screw	2
9	Tank cover	1
10	Seal liner	1
11	Spring	1
12	Cover	1
13	Gun housing	1
14	O-ring	1
15	Regulator	1
16	Regulator spring	1
17	Trigger	1
18	Seal liner	1
19	Suction pipe	1
20	Control valve assembly	1
21	Tank	1
22	Housing assembly	1
23	Lead wire sealing ring	1
24	Engine mount	1
25	Engine cushion	1
26	Engine	1
27	Air filert	1
28	Air inlet cover	1
29	Screw	9
30	Cord clamp	1
31	Pin	1
32	Battery interface housing	1
33	Push rod spring	1
34	Push rod	1
35	Power cable	3
36	Switch	1
37	Battery interface	1
F1	Cleaning needle	1
F2	Spray nozzle F2.1. Spray nozzle	1
F3	Spanner	1
F4	Viscosity cup	1
F5	Cleaning brush	1







# **LUMBER JACK**

**LUMBERJACK TOOLS  
UNIT C MANDERS  
INDUSTRIAL ESTATE  
WOLVERHAMPTON  
WV1 2RP**

**[WWW.LUMBERJACKTOOLS.CO.UK](http://WWW.LUMBERJACKTOOLS.CO.UK)**